

# RTH

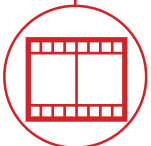
## 8.46



CONSTRUCTION



LOGISTICS



EVENTS AND  
FILM



RTH  
8.46



**CAB**

Best-in-class  
safety and visibility



**PERFORMANCE**

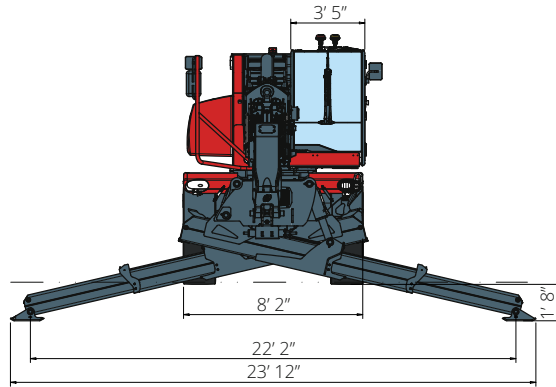
Unrivalled lifting  
performance



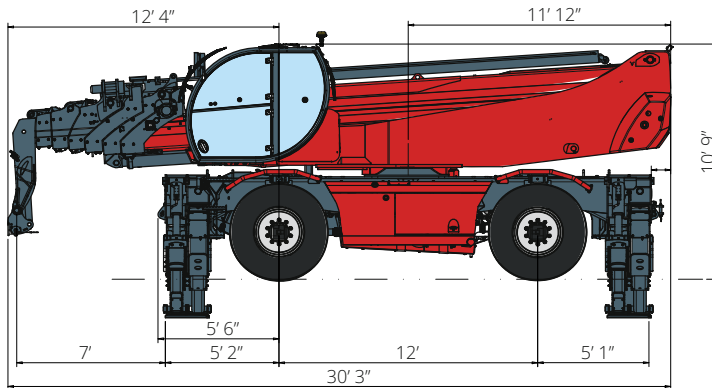
**LOAD LIVE DIAGRAM**

Three real-time dynamic  
load charts

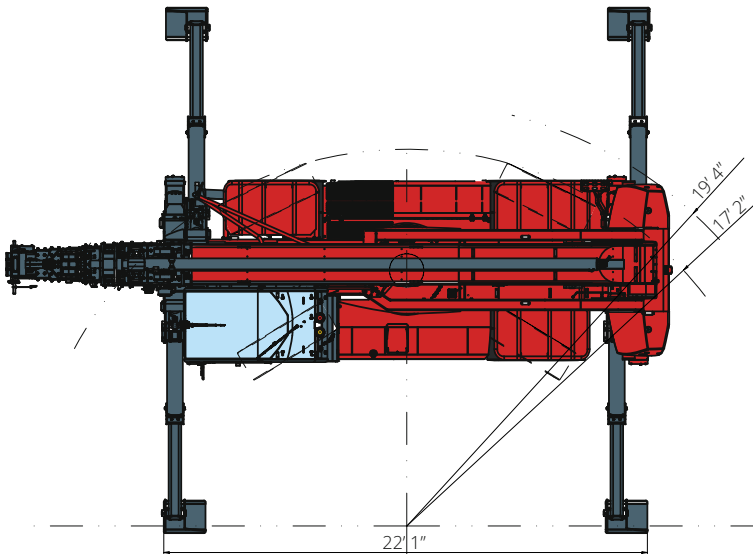
**DIMENSIONS (ft and in)**



**FRONT**  
view



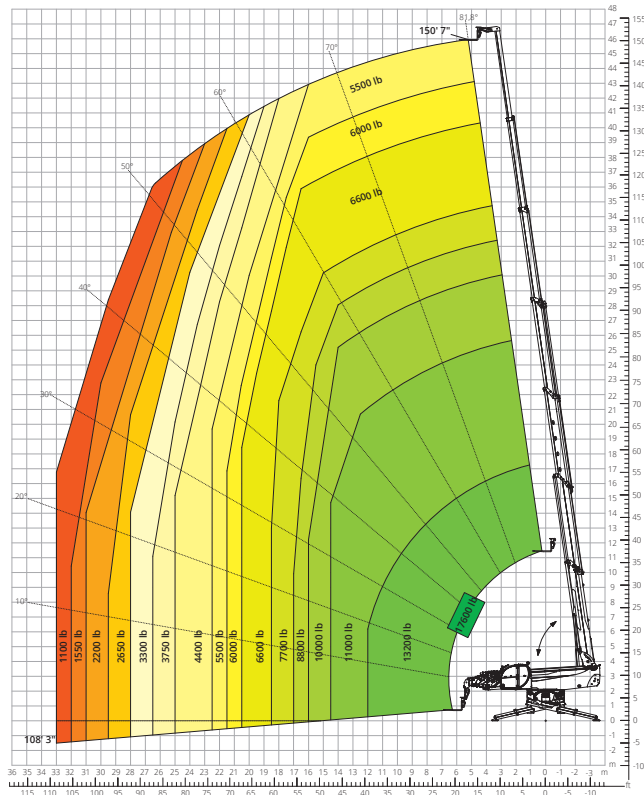
**SIDE**  
view



**TOP**  
view

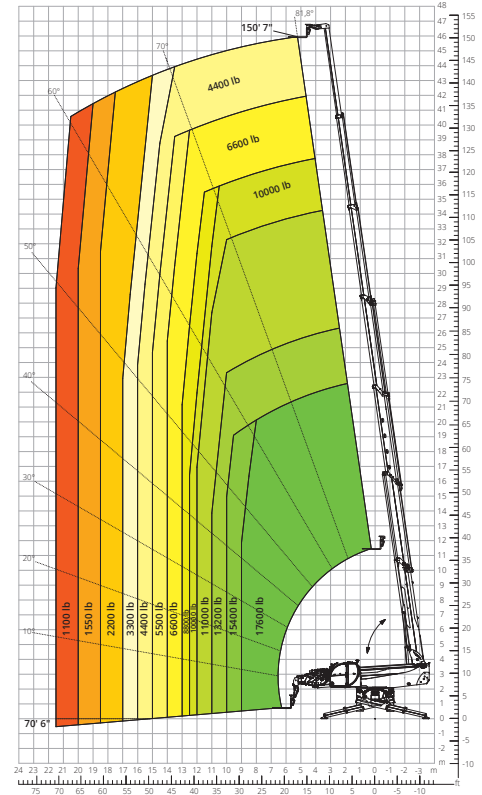
Load chart with  
**FULLY EXTENDED STABILIZERS (360°) - M1**

ATT - 03 - 007



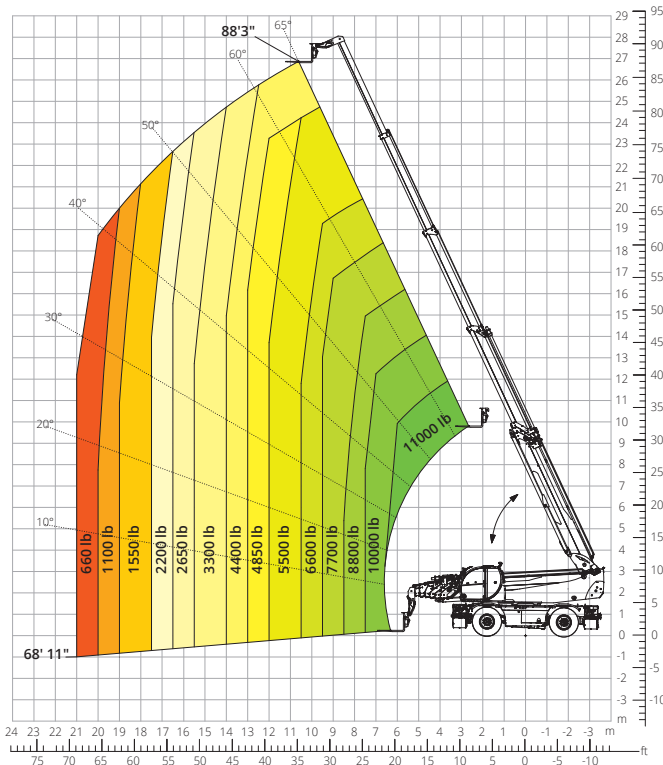
Load chart with  
**FULLY EXTENDED STABILIZERS (360°) - M2**

ATT - 03 - 007



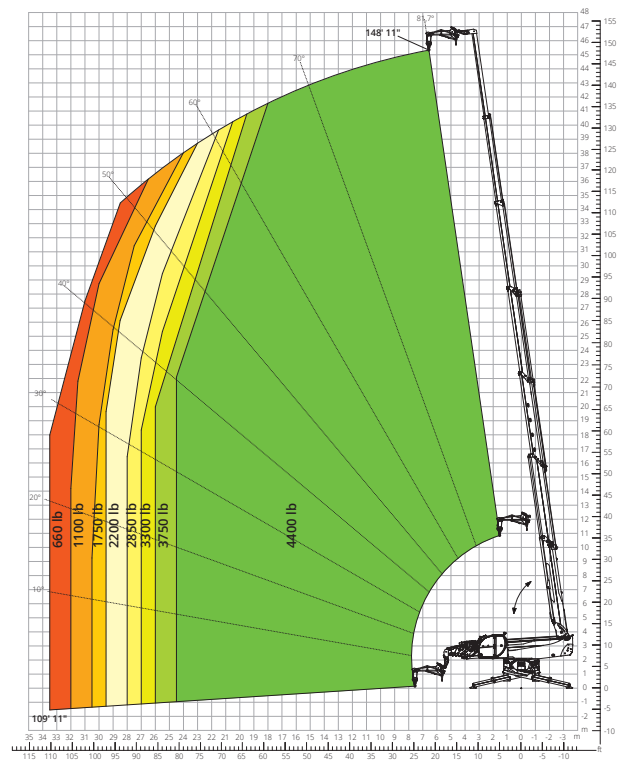
Load chart  
**FRONT ATTACHMENT ON TIRES**

ATT - 03 - 007



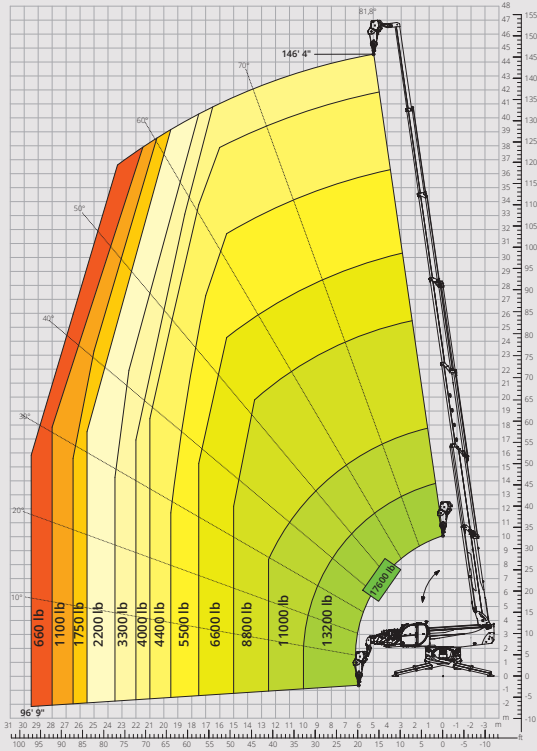
Load chart with  
**JIB WITH WINCH, 4,400 lb**

ATT - 04 - 015



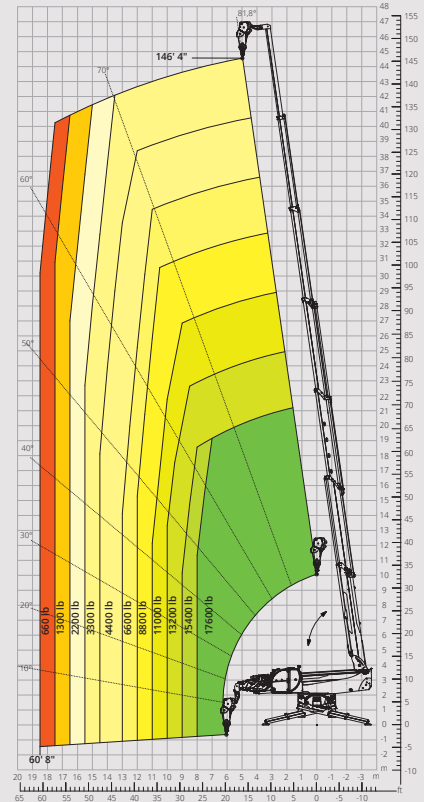
Load chart with  
**WINCH, 17,600 lb - M1**

ATT - 02 - 006



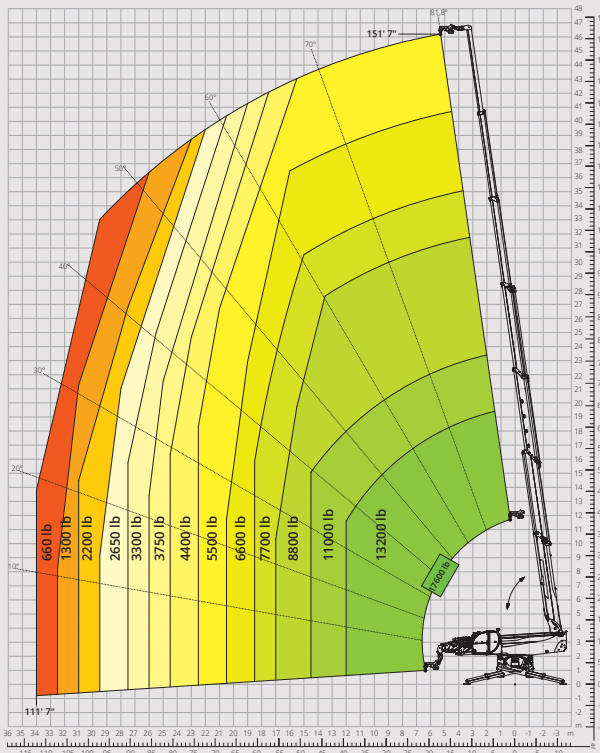
Load chart with  
**WINCH, 17,600 lb - M2**

ATT - 02 - 006



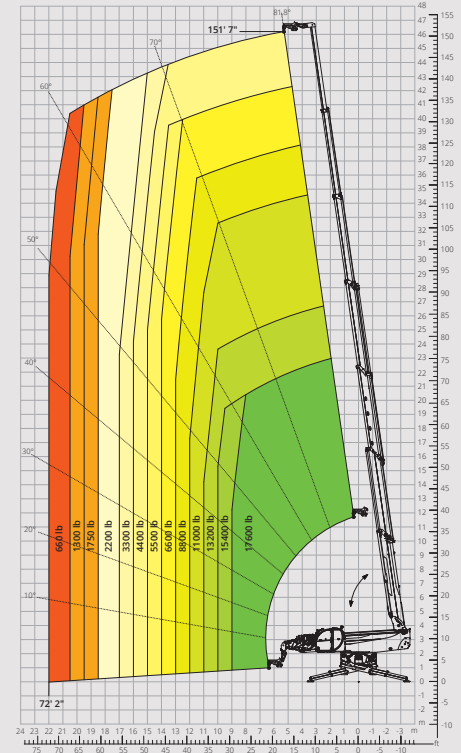
Load chart with  
**HOOK, 17,600 lb - M1**

ATT - 05 - 003



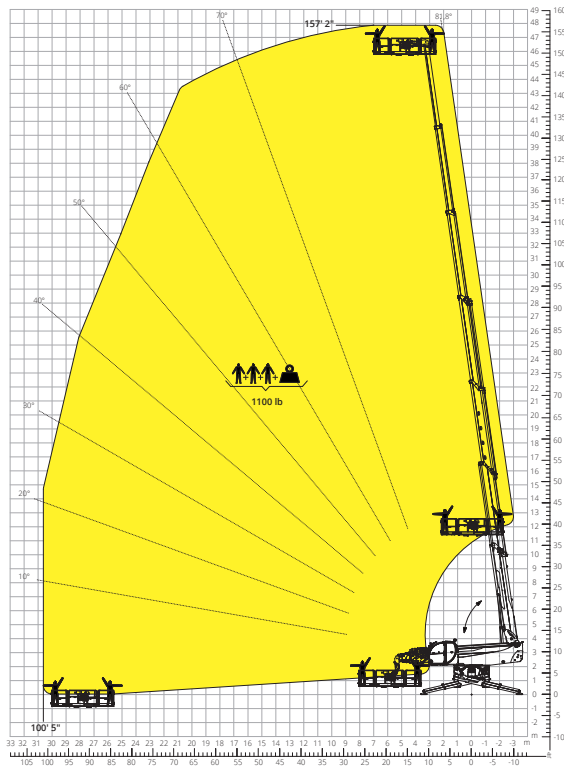
Load chart with  
**HOOK, 17,600 lb - M2**

ATT - 05 - 003



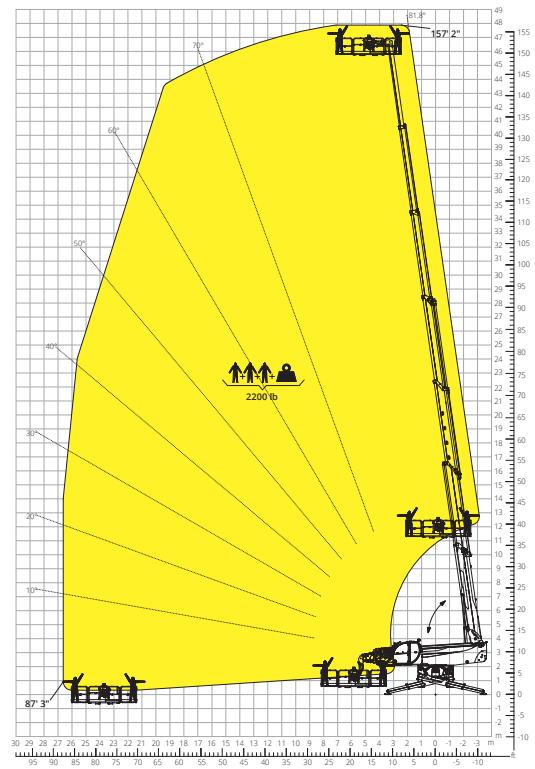
Load chart with  
**ROTATING EXTENDABLE PLATFORM, 1,100 lb**

ATT - 01 - 007



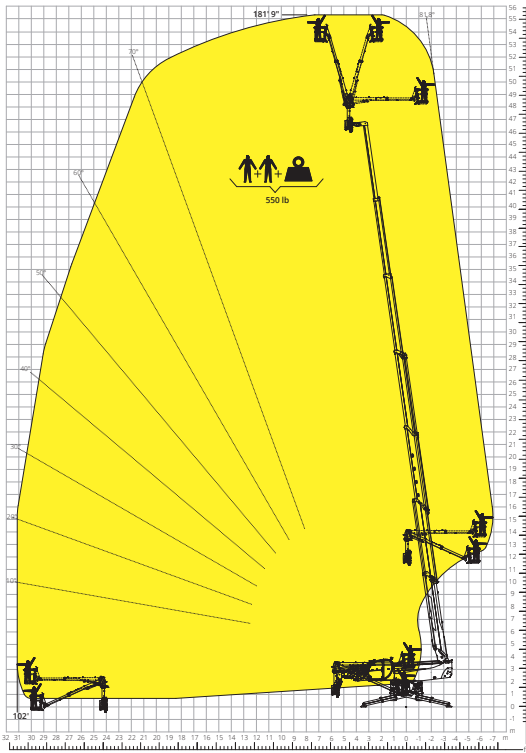
Load chart with  
**ROTATING EXTENDABLE PLATFORM, 2,200 lb**

ATT - 01 - 016



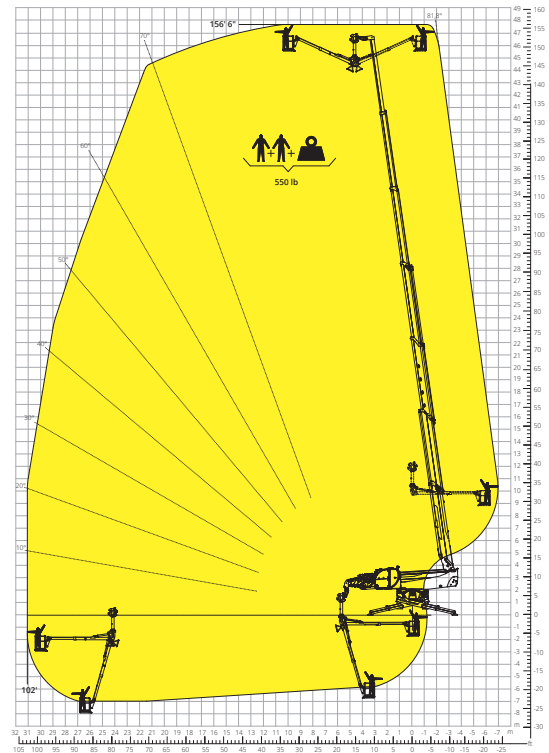
Load chart with  
**OVER-UNDER PLATFORM - POSITIVE**

ATT - 01 - 024



Load chart with  
**OVER-UNDER PLATFORM - NEGATIVE**

ATT - 01 - 024



|  |  |  |                                 |
|--|--|--|---------------------------------|
| <b>Machine model</b>                   | Rotating telescopic handler  | RTH 8.46                                       |                                 |
|  | Maximum lifting capacity   | 17,600 lb                                      |                                 |
|  | Maximum lifting height   | 150' 7"  |                                 |
|  | Maximum reach  | 105'   |                                 |
|  | Rotation   | 360° (continuous)                              |                                 |
| <b>Stabilizers</b>                     | Type   | Telescopic scissor                             |                                 |
| <b>Engine</b>                          | Model  | <b>Volvo TAD 552 VE Stage IV</b>               | <b>Volvo TAD 583 VE Stage V</b> |
|  | Rated power  | 160 kW (218 hp) at 2,200 rpm                   | 175 kW (238 hp) at 2,300 rpm    |
|  | Maximum torque   | 671 lb/ft at 1,450 rpm                         | 719 lb/ft at 1,380 rpm          |
|  | Displacement   | 5.13 l   |                                 |
|  | Cylinders  | 4 in line                                      |                                 |
|  | Engine type  | Turbocharged direct injection diesel           |                                 |
|  | Cooling system   | Water - intercooler                            |                                 |
| <b>Transmission</b>                    | Type   | Hydrostatic                                    |                                 |
|  | Maximum pressure   | 480 bar  |                                 |
|  | Gearbox  | Dropbox, 2 speeds forward-reverse              |                                 |
| <b>Axles and brakes</b>                | Type   | Axles with planetary gearboxes                 |                                 |
|  | Front axle   | Oscillating and steering with levelling, +/-8° |                                 |
|  | Rear axle  | Oscillating and steering with hydraulic lock   |                                 |
|  | No. of steering wheels   | 4WD - 4WS                                      |                                 |
|  | Steering mode  | Frontal/Concentric/Crab                        |                                 |
|  | Service brake  | Wet multi-disk on front and rear axle          |                                 |
|  | Parking brake  | Hydraulic with negative action on front axle   |                                 |
|  | Tyre sizes   | 17.5 R25                                       |                                 |
| <b>Performance</b>                     | Max. travel speed  | 16 mph   |                                 |
|  | Gradeability (unladen)   | 41%  |                                 |
|  | Turning radius (at forks)  | NA   |                                 |
| <b>Weights</b>                         | Total unladen*   | 77,820 lb                                      |                                 |
|  | Front axle unladen (boom retracted and lowered)*   | 34,060 lb                                      |                                 |
|  | Rear axle unladen (boom retracted and lowered)*  | 43,760 lb                                      |                                 |
| <b>Tank and system capacities</b>      | Diesel fuel  | 74 U.S. gal                                    | 74 U.S. gal                     |
|  | AdBlue   | -  | 10.56 U.S. gal                  |
|  | Hydraulic fluid  | 71.1 U.S. gal                                  | 71.1 U.S. gal                   |
|  | Engine oil   | 4.22 U.S. gal                                  | 4.22 U.S. gal                   |
|  | Coolant  | 10.56 U.S. gal                                 | 10.56 U.S. gal                  |
| <b>Hydraulic circuit for movements</b> | Circuit type   | Load sensing                                   |                                 |
|  | Service pump   | Variable displacement                          |                                 |
|  | Max. hydraulic flow rate   | 205 l/min                                      |                                 |
|  | Max. boom head flow rate   | 75 l/min                                       |                                 |
|  | Max. working pressure  | 350 bar  |                                 |
|  | Distributor for boom and turret movements  | SIL 2 electro-proportional valve               |                                 |
| Movements control                      | Dual joystick with integrated manoeuvre enable   |  |                                 |
| <b>Standards met</b>                   | 2006/42/EC: EU Machinery Directive   |  |                                 |
|  | 2016/1628: EU Regulation on the emissions of stage V engines                                   |  |                                 |
|  | EN 1459-X: Relating to standards on the safety requirements for variable reach machines        |  |                                 |
|  | EN 280/EN 280-1/EN 280-2: standards relating to mobile elevating work platforms (if available) |  |                                 |
|  | ROPS/level 2 FOPS: relating to the standards for protective structures                         |  |                                 |

The data given in this brochure are provided for information purposes and are subject to change without prior notice.

All images are purely guideline and might not give an exact representation of the product.

\*the stated weight refers to the vehicle unladen with standard equipment and may vary depending on the chosen configuration.

## The standard machine configuration includes:

### CAB

- Premium tilting seat with air suspension and headrest
- Adjustable steering column
- Analogue joypad
- Adjustable sunblind
- Heating
- Air conditioning
- FM/AM radio with USB and Bluetooth connectivity
- Ambient LED lights
- USB Type-A and Type-C (5 V) inputs

### REAL TIME INFORMATION

- Touchscreen, 12"
- MCTS – Magni Combi Touch System on-board software
- Automatic RFID tools recognition system
- LMI – Load Moment Indicator
- LLD – Live Load Diagram
- Onboard and remote integrated diagnostics
- Reversing camera with image integrated in the MCTS

### TECHNICAL SPECIFICATIONS

- Q-Fit standard
- Provision for platform
- Advanced three-line CAN BUS system
- Automatic levelling system for outriggers
- Automatic front and rear wheel alignment
- High-precision turret rotation motor by Liebherr
- Automatic parking brake
- Mechanical battery cut-off in engine compartment
- Electrical system: 24 V – IP67

### SERVICE

- MyMagni by Trackunit connectivity system (2 years)
- Warranty: 24 months/2,000 hours