

# HTH 24.11



MINING &  
QUARRYING



HEAVY  
LOGISTICS

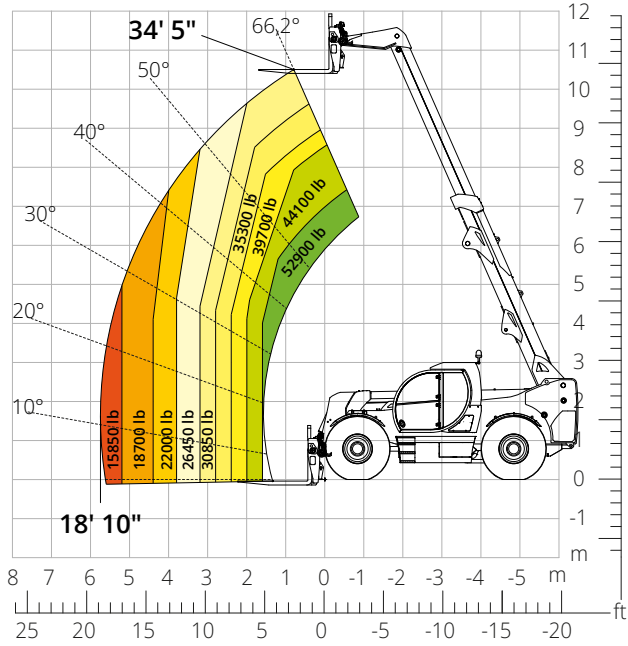


DEFENSE



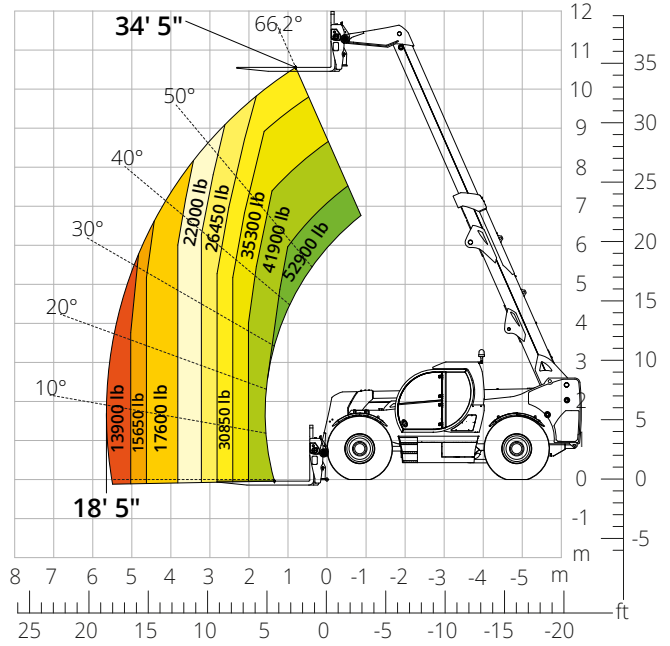
Load chart  
**FRONT ATTACHMENT ON TIRES (WORLD)**

ATT-03-027



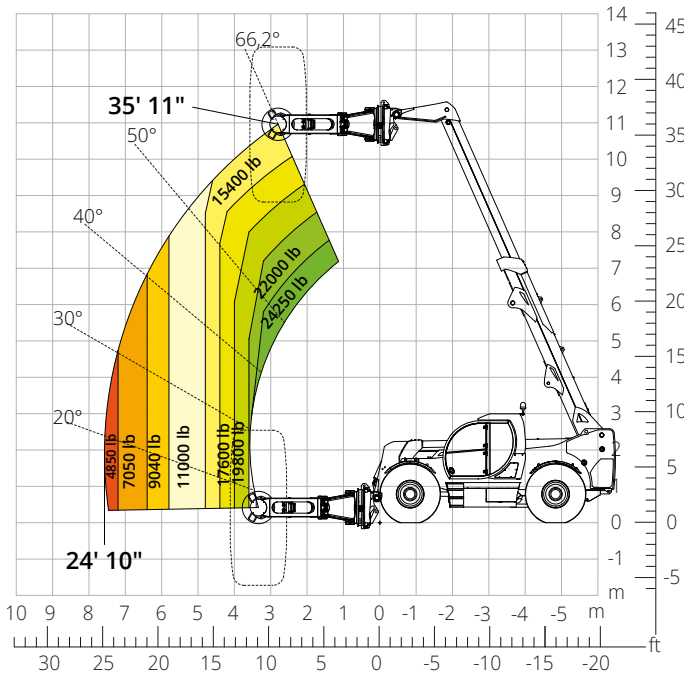
Load chart  
**FRONT ATTACHMENT ON TIRES (WORLD)**  
**FORK CARRIAGE WITH POSITIONER -**  
**FORK LENGTH 2,400 mm**

ATT-03-028



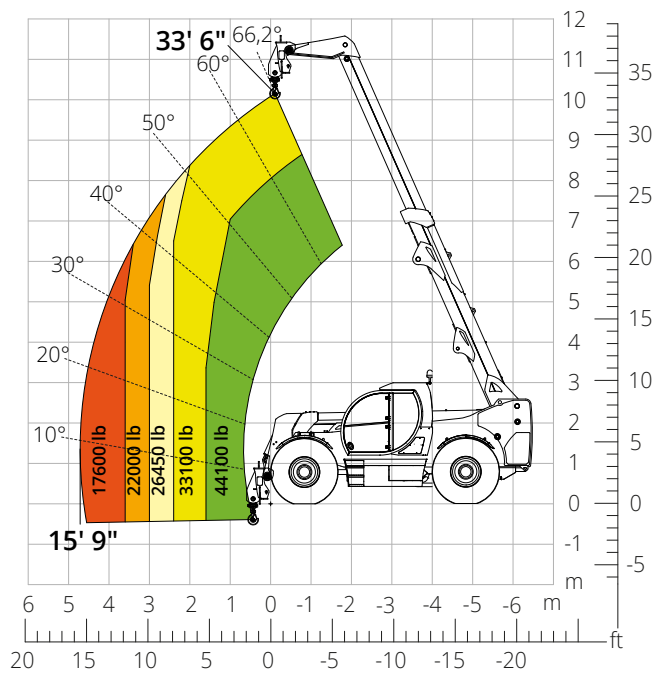
Load chart with  
**TIRE HANDLER, 35,300 lb**

ATT-06-007



Load chart with  
**HOOK, 44,100 lb**

ATT-05-008



<b>Machine model</b>	Telescopic handler	HTH 24.11	
	Maximum lifting capacity	52,900 lb	
	Maximum lifting height	34' 5"	
	Maximum reach	18' 10"	
<b>Engine</b>	Model	<b>Volvo TAD583 VE-Stage V</b>	<b>Volvo TAD552 VE-Stage IIIA</b>
	Rated power	175 kW (238 hp) at 2,300 rpm	
	Maximum torque	719 lb/ft at 1,380 rpm	
	Displacement	5.13 l	
	Cylinders	4 in line	
	Engine type	Turbocharged direct injection common rail diesel	
	Cooling system	Water - intercooler	
<b>Transmission</b>	Type	Hydrostatic	
	Maximum pressure	450 bar	
	Gearbox	Dropbox, 2 speeds forward-reverse	
<b>Axles and brakes</b>	Type	Heavy-duty with planetary gearboxes	
	Front axle	Steering and levelling	
	Rear axle	Steering and oscillating	
	No. of driving - steering wheels	4WD - 4WS	
	Steering mode	Frontal/Concentric/Crab	
	Service brake	Servo-assisted pedal, acting on front and rear wheels	
	Parking brake	Hydraulic with negative action on front and rear axles	
	Tire sizes	18,00- R 25	
<b>Performance</b>	Max. travel speed	15.5 mph	
	Gradeability (unladen)	64%	
	Turning radius	17'9"	
<b>Weights</b>	Total unladen*	65,500 lb	
	Front axle unladen (boom retracted and lowered)*	20,300 lb	
	Rear axle unladen (boom retracted and lowered)*	45,200 lb	
<b>Tank and system capacities</b>	Diesel fuel	52.8 U.S. gal	
	AdBlue	10.6 U.S. gal	
	Hydraulic fluid	52.8 U.S. gal	
	Engine oil	4.2 U.S. gal	
	Coolant	12.4 U.S. gal	
<b>Hydraulic circuit for movements</b>	Circuit type	Load sensing	
	Service pump	Variable displacement	
	Max. hydraulic flow rate	165 l/min	
	Max. boom head flow rate	100 l/min	
	Max. working pressure	350 bar	
	Distributor for boom movements	Proportional hydraulic distributor	
	Movements control	Multifunction electro-proportional joystick	
<b>Standards met</b>	2006/42/EC: EU Machinery Directive		
	2016/1628: EU Regulation on the emissions of stage V engines		
	EN 1459-X: Relating to standards on the safety requirements for variable reach machines		
	EN 280/EN 280-1/EN 280-2: standards relating to mobile elevating work platforms (if available)		
	ROPS/level 2 FOPS: relating to the standards for protective structures		

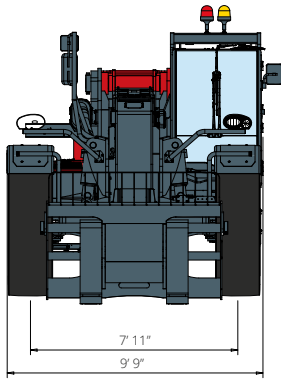
*The data given in this brochure are provided for information purposes and are subject to change without prior notice.*

*All images are purely guideline and might not give an exact representation of the product.*

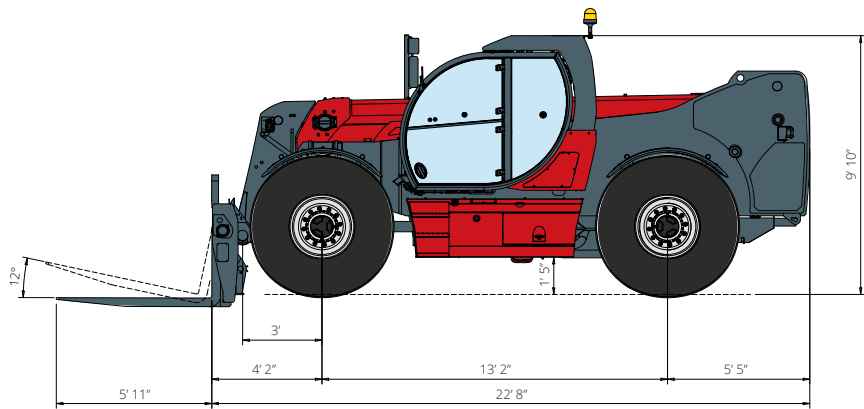
*\*the stated weight refers to the vehicle unladen with standard equipment and may vary depending on the chosen configuration.*

# HTH 24.11

## DIMENSIONS (ft and in)

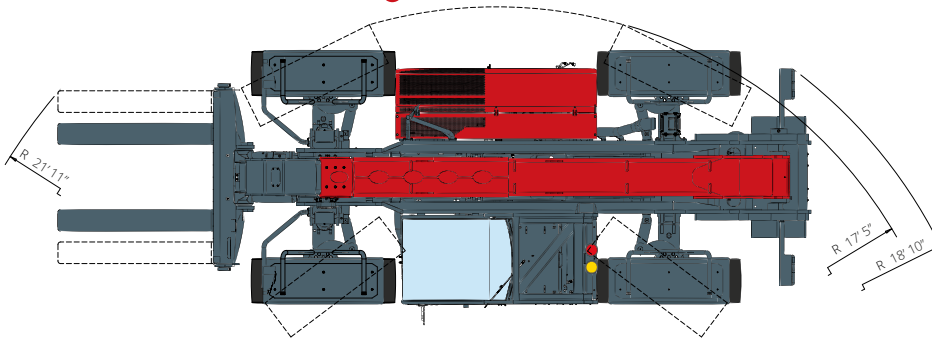


**FRONT**  
view



**TOP**  
view

**SIDE**  
view



The standard machine configuration includes:

### CAB

- Comfort seat
- Adjustable steering column
- Analogue joystick
- Heating
- Air conditioning
- FM/AM radio with USB and Bluetooth connectivity
- USB Type-A (5 V) inputs

### REAL TIME INFORMATION

- Touchscreen, 7"
- MCTS – Magni Combi Touch System on-board software
- Automatic RFID tools recognition system
- LMI – Load Moment Indicator
- Onboard and remote integrated diagnostics

### TECHNICAL SPECIFICATIONS

- Q-Fit Heavy-Duty
- Two-line CAN BUS system
- Automatic front and rear wheel alignment
- Automatic parking brake
- Mechanical battery cut-off in engine compartment
- Electrical system: 24 V – IP67

### SERVICE

- MyMagni by Trackunit connectivity system (2 years)
- Warranty: 24 months/2,000 hours