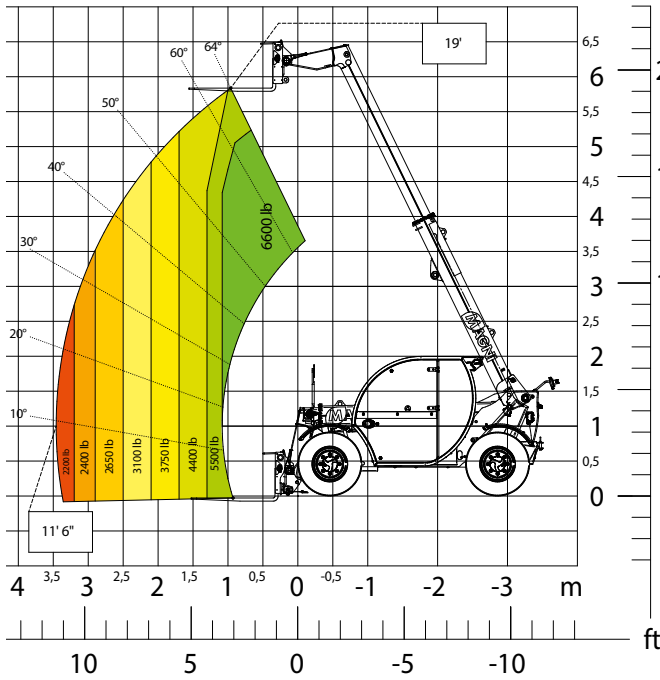


TH



3.6

PRELIMINARY



Load chart **on tyres**



CONSTRUCTION



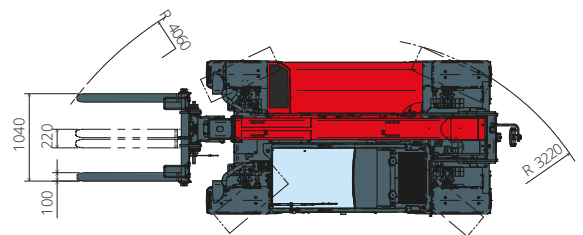
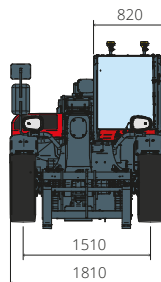
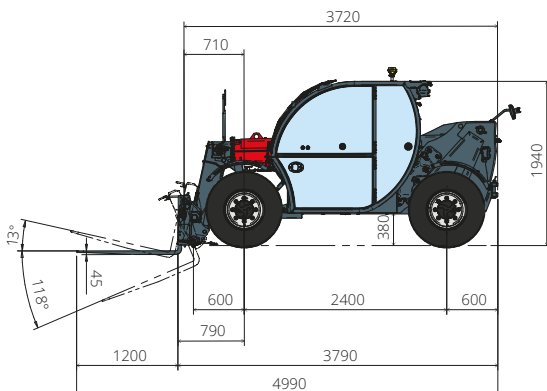
LOGISTICS



MINING



EVENTS AND FILM



Machine model	Telescopic handler	TH 3.6	
	Maximum lifting capacity	6,600 lb	
	Maximum lifting height	19'	
	Maximum reach	10'6"	
Stabilizers	Type	-	
Engine	Model	Deutz TCD 2,9 L4 EDG Stage IIIA	Deutz TCD 2,9 L4 Stage V
	Rated power	55.4 kW (75.3 hp) at 2,600 rpm	
	Maximum torque	192 lb/ft at 1,600 rpm	
	Displacement	2.9 l	
	Cylinders	4 in line	
	Engine configuration	Turbocharged direct injection diesel	
	Cooling system	Water	
Transmission	Type	Hydrostatic	
	Maximum pressure	500 bar	
	Gear box	Direct drive 2 speed	
Axles and brakes	Type	Axles with planetary gearboxes	
	Front axle	Steering	
	Rear axle	Free oscillation	
	No. of steering wheels	4WD - 4WS	
	Steering mode	Frontal/Concentric/Crab	
	Service brake	Wet multi-disk on front axle	
	Parking brake	Hydraulic with negative action on front axle	
Performance	Tyres dimensions	12.0/75 R18	
	Max. travel speed	21 mph	
	Maximum mass towable on hook	6,850 lb	
	Gradeability	51%	
Weights	Turning radius (end of forks)	13'4"	
	Total unladen*	10,700 lb	
	Front axle unladen (boom retracted and lowered)*	2,000 lb	
Tank and system capacities	Rear axle unladen (boom retracted and lowered)*	6,300 lb	
	Fuel tank	17.2 U.S. gal	
	AdBlue	-	
	Hydraulic oil tank	22.4 U.S. gal	
	Engine oil tank	2.4 U.S. gal	
Hydraulic circuit for movements	Cooling liquid	4 U.S. gal	
	Circuit type	Gear pump	
	Service pump	Fixed displacement	
	Max. hydraulic flow rate	87 l/min	
	Max. boom head flow rate	75 l/min	
	Max. operating system pressure	255 bar	
Standard met	Controls for boom movements	Electro-proportional valve	
	Movements control	1 joystick with integrated manoeuvre enable	
	2006/42/EC: EU Machinery Directive		
	2016/1628: EU Regulation on the emissions of stage V engines		
	EN 1459-X: Relating to standards on the safety requirements for variable reach machines		
EN 280-1/EN 280-2: standards relating to mobile elevating work platforms (if available)			
ROPS/FOPS: relating to the standards for protective structures			

The data given in this brochure are provided for information purposes and are subject to change without prior notice. All images are purely guideline and might not give an exact representation of the product.

*the stated weight refers to the vehicle unladen with standard equipment and may vary depending on the chosen configuration.