

# HTH

## 27.11



MINING &  
QUARRYING



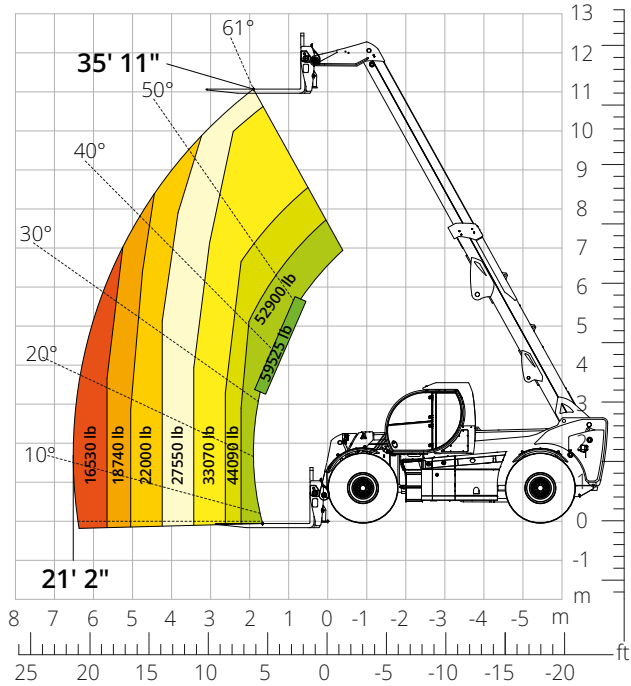
HEAVY  
LOGISTICS



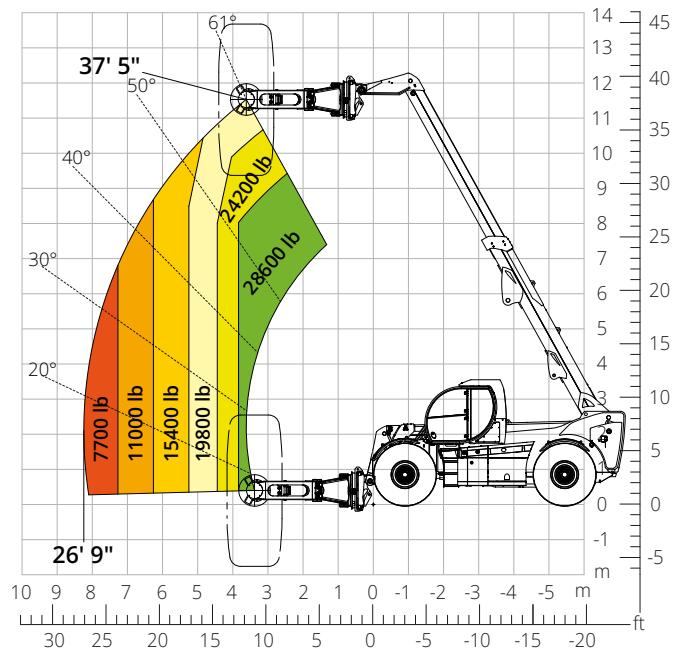
DEFENSE



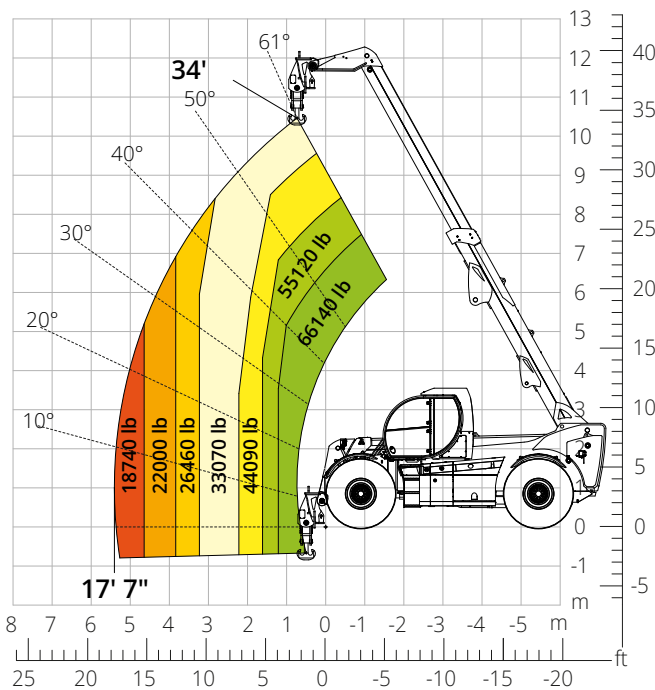
Load chart  
**FRONT ATTACHMENT ON TIRES (WORLD)**  
 ATT-03-029



Load chart with  
**TIRE HANDLER, 35,300 lb**  
 ATT-06-007



Load chart with  
**HOOK, 66,100 lb**  
 ATT-05-009



<b>Machine model</b>	Telescopic handler	HTH 27.11
	Maximum lifting capacity	59,525 lb
	Maximum lifting height	35' 11"
	Maximum reach	21' 2"
<b>Engine</b>	Model	<b>Volvo TAD583 VE-Stage V</b>
	Rated power	175 kW (238 hp) at 2,300 rpm
	Maximum torque	719 lb/ft at 1,380 rpm
	Displacement	5.13 l
	Cylinders	4 in line
	Engine type	Turbocharged direct injection common rail diesel
	Cooling system	Water - intercooler
<b>Transmission</b>	Type	Hydrostatic
	Maximum pressure	450 bar
	Gearbox	Dropbox, 2 forward speeds and 2WD/4WD selection
<b>Axles and brakes</b>	Type	Heavy-duty with planetary gearboxes
	Front axle	Steering and levelling
	Rear axle	Steering and oscillating
	No. of driving - steering wheels	4WD - 4WS
	Steering mode	Frontal/Concentric/Crab
	Service brake	Servo-assisted pedal, acting on front and rear wheels
	Parking brake	Hydraulic with negative action on front and rear axles
	Tire sizes	26,5- R 25
<b>Performance</b>	Max. travel speed	15.5 mph
	Gradeability (unladen)	53%
	Turning radius	27'11"
<b>Weights</b>	Total unladen*	78,300 lb
	Front axle unladen (boom retracted and lowered)*	28,000 lb
	Rear axle unladen (boom retracted and lowered)*	50,300 lb
<b>Tank and system capacities</b>	Diesel fuel	52.8 U.S. gal
	AdBlue	10.6 U.S. gal
	Hydraulic fluid	52.8 U.S. gal
	Engine oil	4.2 U.S. gal
	Coolant	12.4 U.S. gal
<b>Hydraulic circuit for movements</b>	Circuit type	Load sensing
	Service pump	Variable displacement
	Max. hydraulic flow rate	165 l/min
	Max. boom head flow rate	100 l/min
	Max. working pressure	350 bar
	Distributor for boom movements	Proportional hydraulic distributor
	Movements control	Multifunction electro-proportional joystick
<b>Standards met</b>	2006/42/EC: EU Machinery Directive 2016/1628: EU Regulation on the emissions of stage V engines EN 1459-X: Relating to standards on the safety requirements for variable reach machines ROPS/level 2 FOPS: relating to the standards for protective structures	

*The data given in this brochure are provided for information purposes and are subject to change without prior notice.*

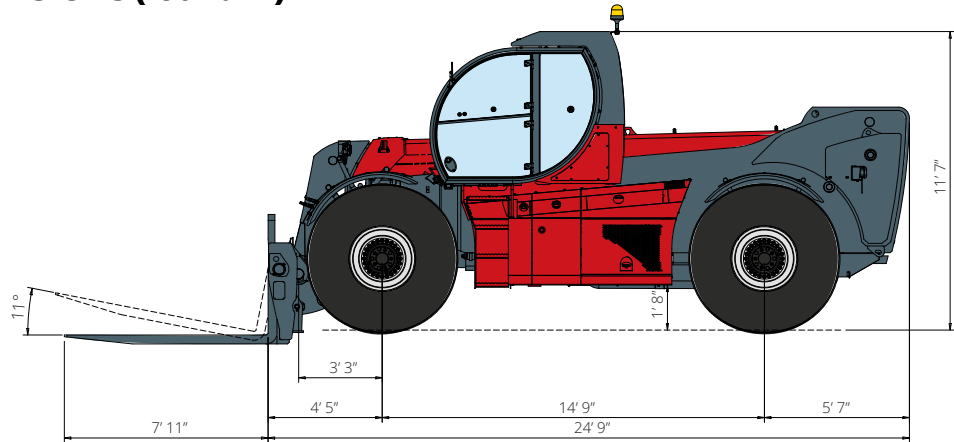
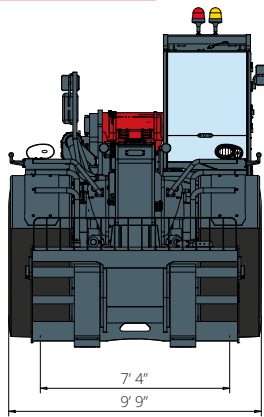
*All images are purely guideline and might not give an exact representation of the product.*

*\*the stated weight refers to the vehicle unladen with standard equipment and may vary depending on the chosen configuration.*

# HTH

## 27.11

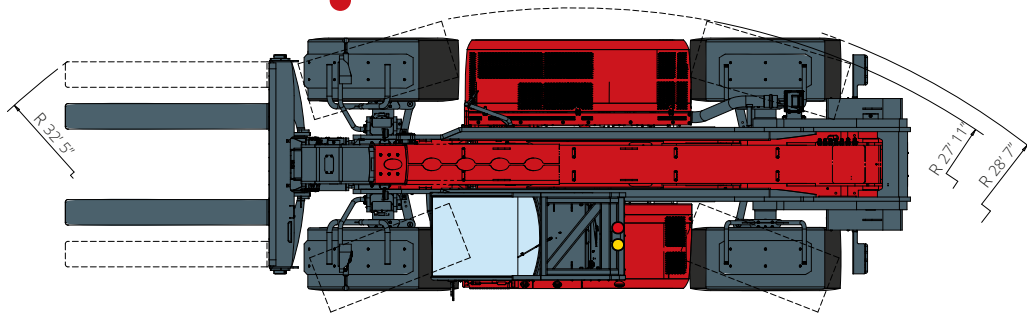
### DIMENSIONS (ft and in)



**FRONT**  
view

**TOP**  
view

**SIDE**  
view



The standard machine configuration includes:

#### CAB

- Comfort seat
- Adjustable steering column
- Analogue joypad
- Heating
- Air conditioning
- FM/AM radio with USB and Bluetooth connectivity
- USB Type-A (5 V) inputs

#### TECHNICAL SPECIFICATIONS

- Q-Fit Heavy-Duty
- Two-line CAN BUS system
- Automatic front and rear wheel alignment
- Automatic parking brake
- Mechanical battery cut-off in engine compartment
- Electrical system: 24 V – IP67

#### REAL TIME INFORMATION

- Touchscreen, 7"
- MCTS – Magni Combi Touch System on-board software
- Automatic RFID tools recognition system
- LMI – Load Moment Indicator
- Onboard and remote integrated diagnostics

#### SERVICE

- MyMagni by Trackunit connectivity system (2 years)
- Warranty: 24 months/2,000 hours