



**IN
OUT**

4WD

4WS

HAB41RT

Articulated boom lifts

STANDARD EQUIPMENT

- Oscillating front axle
- Two travel speeds
- Four-wheel steering
- Four-wheel drive
- Patented extending chassis
- In-Situ axle extension technology
- 360° rotation (continuous)
- Turret locking system
- Ultra-rigid boom
- Hydraulic oil radiator
- Special construction equipment-grade integral driveshaft
- Proportional controls
- Thumb rocker steering
- Flashing light
- Non-marking tyres
- Horn
- Hour counter
- Casing opens for easier servicing
- Negative pressure brake with sensor
- Real-time on-board system
- Platform rotation angle monitoring sensor
- Chain malfunction monitoring
- Speed monitoring
- Working condition monitoring
- Rexroth hydrostatic drive system
- Harsh environment kits
- 12V DC Auxiliary power

BATTERY

- Lithium battery - Maintenance-free
- Battery capacity: 173 Ah/358.4 V
- Charger: 360 V/30 A
- Three-phase 380 V
- Range Extender engine: Kubota D1105/18.2 kW
- Recharge time, 0 - 100% (hours)* 12

BASKET

- Self-levelling
- Rotation +/-90°
- Power socket

SAFETY

- Drive enable system
- Platform load moment indicator
- On-board diagnostics system
- Tilt indicator with alarm
- Basket bottom protection sensor
- Lowering and travel alarms
- Crushing protection
- Cat.3 Safety Architecture - ISO 13849-1

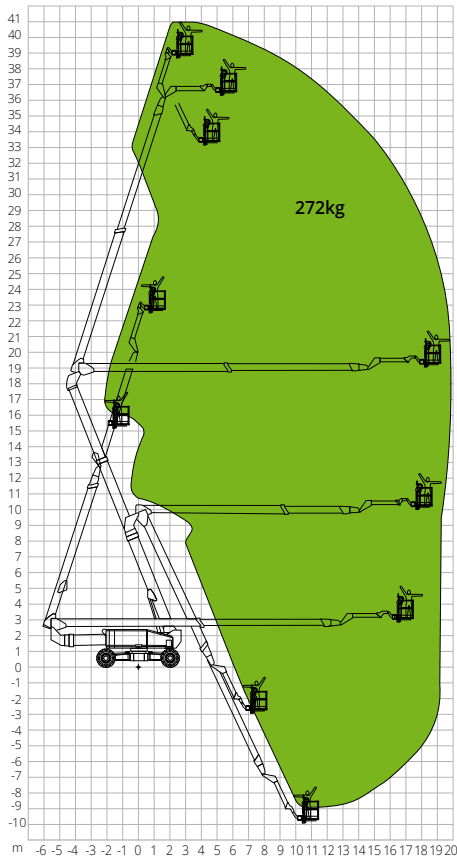


CONSTRUCTION



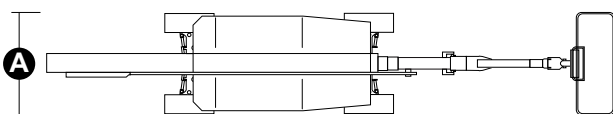
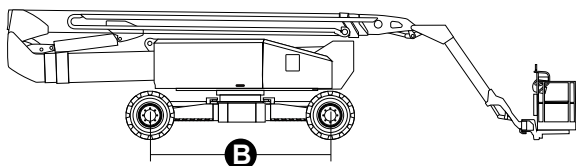
LOGISTICS

LOAD CHART



DIMENSIONS

Platform length	14,70 m
Platform length (transport)	11,95 m
Platform width (transport) A	2,44 m
Platform width (axle expanded)	4,17 m
Platform height	3,10 m
Wheelbase (axle extended)	4,07 m
Wheelbase (axle retracted) B	4,27 m
Tailswing (boom lifted and extended)	2,47 m
Tailswing (boom lowered and retracted)	3,45 m
Ground clearance	0,40m



STANDARDS COMPLIANCE: EN 280, ANSI/SAIA A92.20

The data given in this brochure are provided for information purposes and are subject to change without prior notice. All images are purely guideline and might not give an exact representation of the product.

HAB41RT

Technical data

Max. working height	41,08 m
Max. basket height	39,08 m
Articulation point	18,80 m
Max. reach	19,26 m
Turning radius with axle extended (inside/outside)	2,99 m/5,41 m
Turning radius with axle retracted (inside/outside)	8,27 m/10,85 m
Basket width	0,91 m
Basket length	2,44 m
Basket rotation	180°
Jib type	Standard
Jib length	4,20 m
Jib Vertical Rotation	226°
Below-ground height	6,83 m
Below-ground reach	18,80 m
Auxiliary power	12V

Performance

Platform max. load capacity	272 kg
Max. occupants	2
Max. gradeability (stowed)	45%
Max. working slope	5°
Max. wind speed	12,5 m/s
Travel speed (closed config.)	6,0 km/h
Travel speed (working config.)	1,1 km/h
Turret rotation (continuous)	360°

Engine

Travel power	-
Range Extender engine	Kubota D1105/18.2kW
Diesel tank capacity	100 l
Hydraulic tank capacity	230 l
Transmission	Hydrostatic

Specific characteristics

Tyres	445/50D710
Battery type	Lithium battery - Maintenance-free
Battery capacity	173Ah/358,4V
Charger	360V/30A
Charger type	Three-phase 380 V
Recharge time, 0 - 100% (hours)*	12
Lifting motors	360V/30 kW
Total weight	23.750 kg

*Experimental calculation. The count is affected by climate and usage of the machine