



EAB12AC

Articulated boom lifts

PRELIMINARY



STANDARD EQUIPMENT

- 4x2 drive
- Automatic braking system
- Proportional controls
- Flashing light
- Horn
- Hour counter
- Work light
- Footswitch
- Charge level gauge
- Anchoring eyebolts

BATTERY

- Lead-acid battery
- Battery capacity: 48V/280Ah
- Charger: 48V/35A

SAFETY

- Platform load moment indicator
- On-board diagnostics system
- Emergency lowering system
- Tilt indicator with alarm
- Lowering and travel alarms
- Charging protection system
- Drive Enable
- manual emergency brake release
- Tie-down and lifting points
- Emergency stop button
- Automatic tipping protection system underneath body
- Explosion-proof tubing system

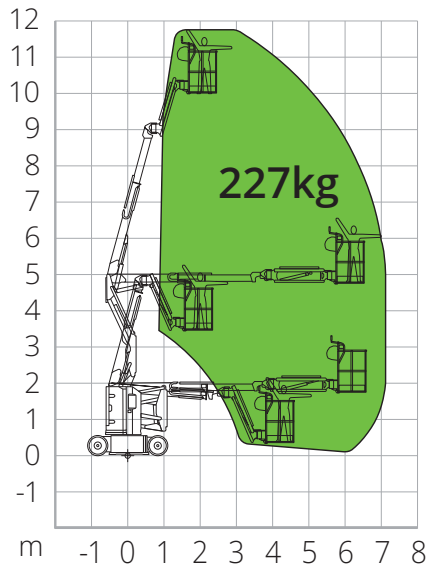


CONSTRUCTION



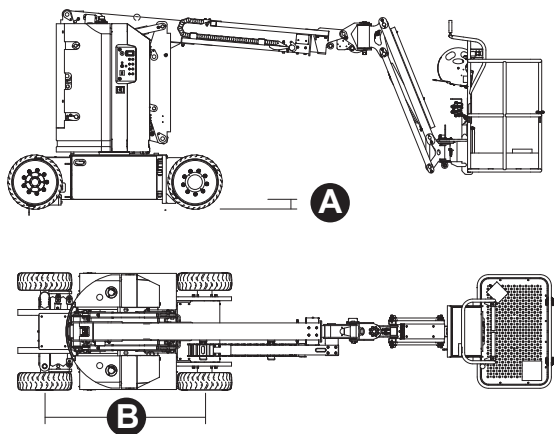
LOGISTICS

LOAD CHART



DIMENSIONS

Platform length	5.74 m
Platform length (transport)	3.89 m
Platform width (transport)	1.20 m
Platform height	2.00 m
Platform height (transport)	2.29 m
Wheelbase	B 1.65 m
Ground clearance	A 0.09 m



EAB12AC

Technical data

Max. working height	11.80 m
Max. basket height	9.80 m
Articulation point	4.70 m
Max. reach	7,10 m
Turning radius (inside)	1.50 m
Turning radius (outside)	3.20 m
Basket length	1.17 m
Basket width	0.76 m
Basket rotation	180 °
Jib Vertical Rotation	+ 74° / -65°

Performance

Platform max. load capacity	227 kg
Max. occupants	2/2
Max. gradeability (stowed)	35%
Max. working slope	2.5°/4.5°
Travel speed (closed config.)	4.8 km/h
Travel speed (working config.)	0.8 km/h
Turret rotation	355°

Specific characteristics

Tyres	22x7
Battery type	Lead-acid battery
Battery capacity	48V/280Ah
Charger	48V/35A
Driving motor	2x32VAC/3,3kw
Lifting motor	30VAC/5,0kw

Total weight

7,080 kg

STANDARDS COMPLIANCE: EN 280-1, ANSI/SAIA A92.20

The data given in this brochure are provided for information purposes and are subject to change without prior notice. All images are purely guideline and might not give an exact representation of the product.