

HTH 10.10



MINING &
QUARRYING



HEAVY
LOGISTICS

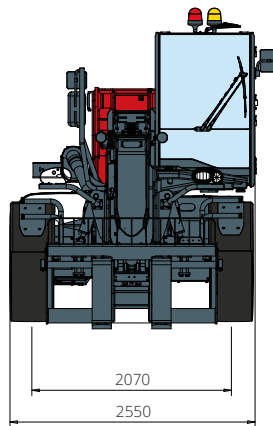


DEFENCE

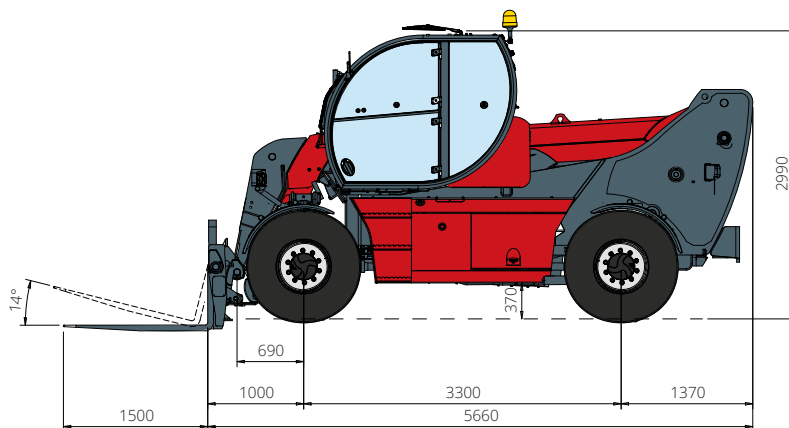


HTH 10.10

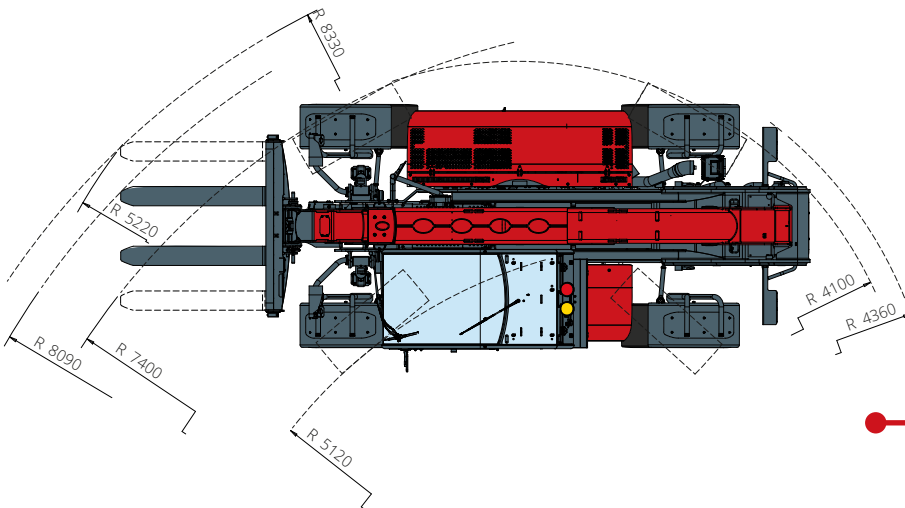
DIMENSIONS (mm)



FRONT
view



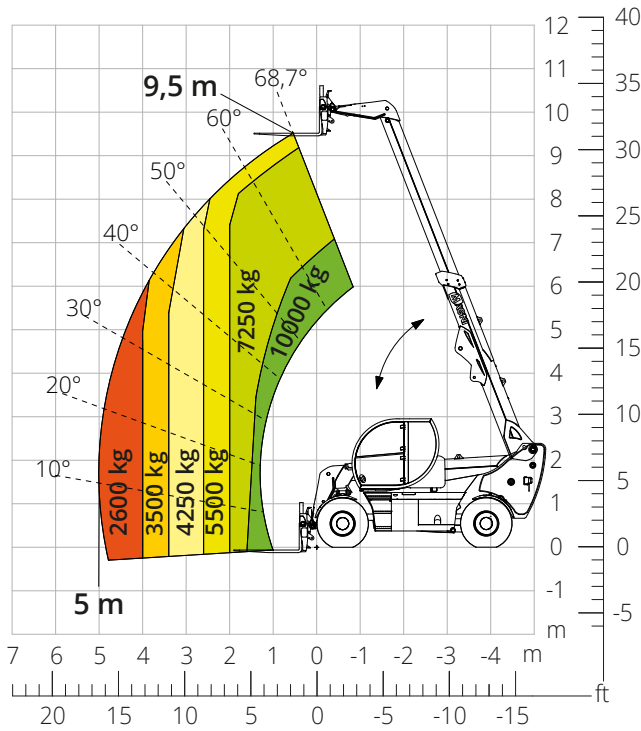
SIDE
view



TOP
view

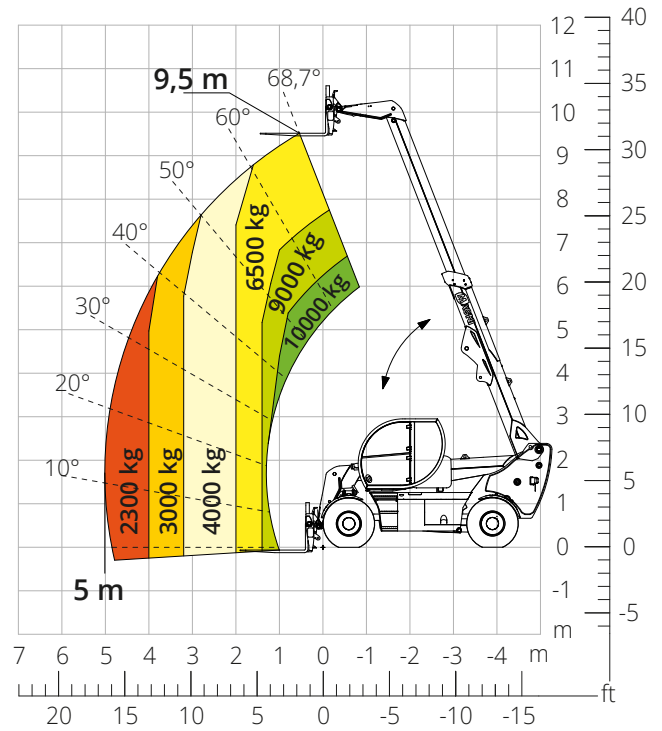
Load chart
FRONT ATTACHMENT ON TYRES
(WORLD NOT AUS)

ATT-03-018/ ATT-03-019



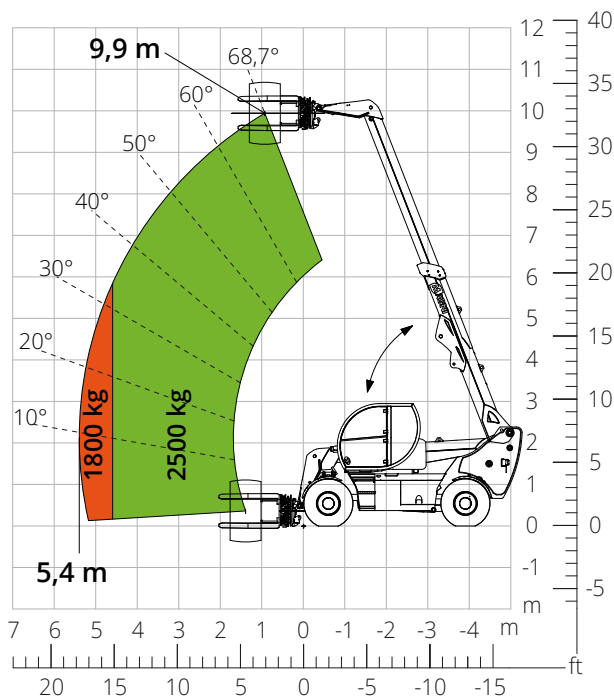
Load chart
FRONT ATTACHMENT ON TYRES (AUS)

ATT-03-018/ ATT-03-019



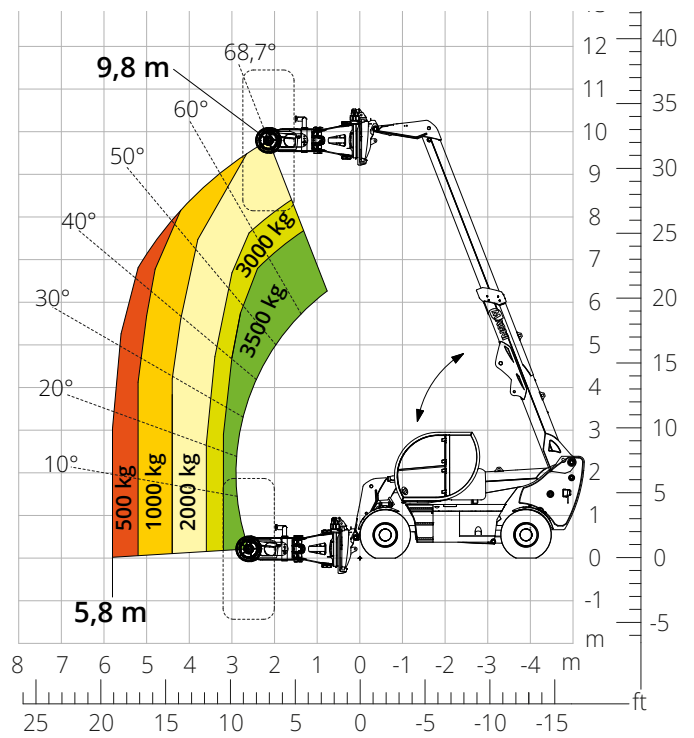
Load chart with
TYRE HANDLER, 2,500 kg

ATT-06-003

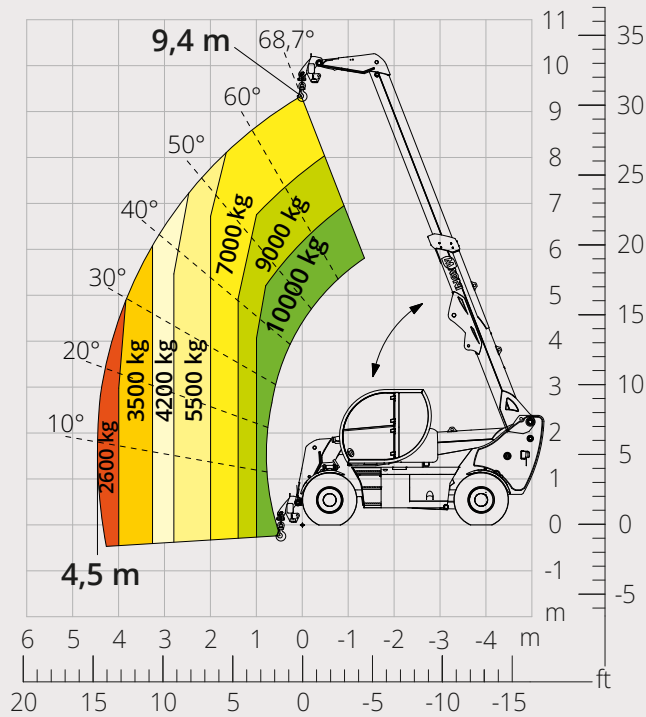


Load chart with
TYRE HANDLER, 3,500 kg

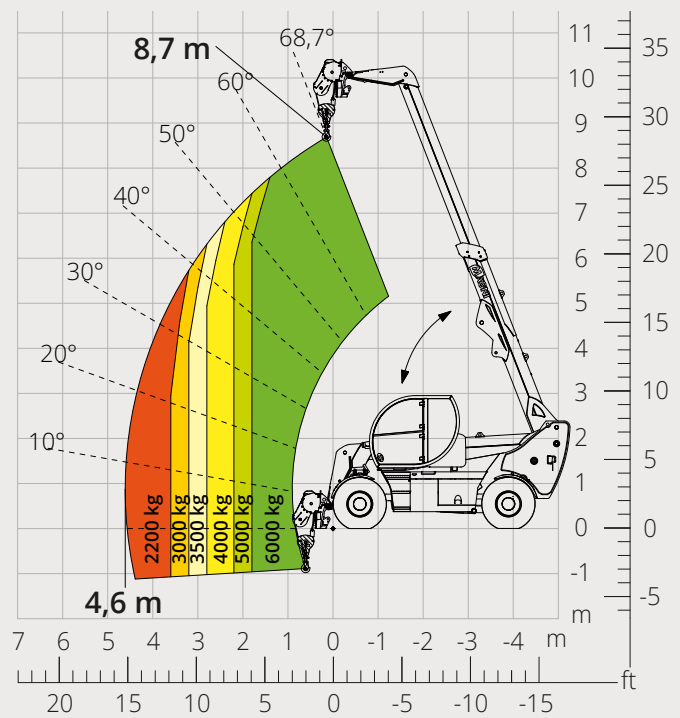
ATT-06-004



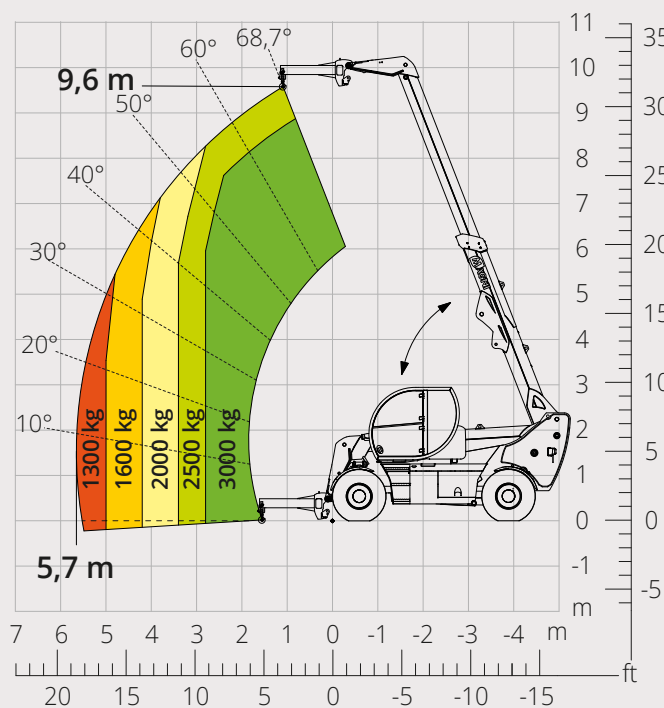
Load chart with
HOOK, 10,000 kg (WORLD NOT AUS)
ATT-05-005



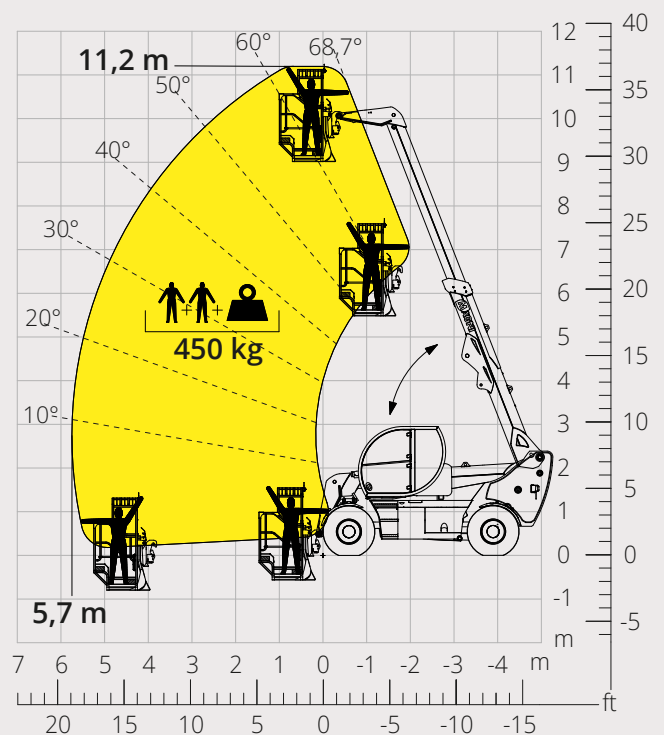
Load chart with
WINCH, 6,000 kg
ATT-02-004



Load chart with
JIB, 3,000 kg
ATT-04-019



Load chart with
PLATFORM, 450 kg, FOR MINES
ATT-01-027



Machine model	Telescopic handler	HTH 10.10
	Maximum lifting capacity	10,000 kg
	Maximum lifting height	9.50 m
	Maximum reach	5.00 m
Engine	Model	Deutz TCD 3,6 L4-Stage V Deutz TCD 3,6 L4 -Stage IIIA
	Rated power	100 kW (136 hp) at 2,200 rpm
	Maximum torque	500 Nm at 1,600 rpm
	Displacement	3,62 l
	Cylinders	4 in line
	Engine type	Turbocharged direct injection common rail diesel
	Cooling system	Water - intercooler
Transmission	Type	Hydrostatic
	Maximum pressure	450 bar
	Gearbox	Dropbox, 2 speeds forward-reverse
Axles and brakes	Type	Heavy-duty with planetary gearboxes
	Front axle	Steering and levelling
	Rear axle	Steering and oscillating
	No. of driving - steering wheels	4WD - 4WS
	Steering mode	Frontal/Concentric/Crab
	Service brake	Servo-assisted pedal, acting on front and rear wheels
	Parking brake	Hydraulic with negative action on front and rear axles
	Tyre sizes	18 R22.5
Performance	Max. travel speed	40 km/h
	Gradeability (unladen)	63%
	Turning radius	4,100 mm
Weights	Total unladen*	13,200 kg
	Front axle unladen (boom retracted and lowered)*	4,700 kg
	Rear axle unladen (boom retracted and lowered)*	8,500 kg
Tank and system capacities	Diesel fuel	195 l
	AdBlue	10 l
	Hydraulic fluid	190 l
	Engine oil	9 l
	Coolant	20 l
Hydraulic circuit for movements	Circuit type	Load sensing
	Service pump	Variable displacement
	Max. hydraulic flow rate	156 l/min
	Max. boom head flow rate	75 l/min
	Max. working pressure	400 bar
	Distributor for boom movements	Proportional hydraulic distributor
	Movements control	Multifunction electro-proportional joystick
Standards met	2006/42/EC: EU Machinery Directive 2016/1628: EU Regulation on the emissions of stage V engines EN 1459-X: Relating to standards on the safety requirements for variable reach machines ROPS/level 2 FOPS: relating to the standards for protective structures	

The data given in this brochure are provided for information purposes and are subject to change without prior notice.

All images are purely guideline and might not give an exact representation of the product.

**the stated weight refers to the vehicle unladen with standard equipment and may vary depending on the chosen configuration.*

The standard machine configuration includes:

CAB

- Comfort seat
- Adjustable steering column
- Analogue joypad
- Heating
- Air conditioning
- FM/AM radio with USB and Bluetooth connectivity
- USB Type-A (5 V) inputs

REAL TIME INFORMATION

- Touchscreen, 7"
- MCTS – Magni Combi Touch System on-board software
- Automatic RFID tools recognition system
- LMI – Load Moment Indicator
- Onboard and remote integrated diagnostics

TECHNICAL SPECIFICATIONS

- Q-Fit standard
- Provision for platform
- Two-line CAN BUS system
- Automatic front and rear wheel alignment
- Automatic parking brake
- Mechanical battery cut-off in engine compartment
- Electrical system: 24 V – IP67

SERVICE

- MyMagni by Trackunit connectivity system (2 years)
- Warranty: 24 months/2,000 hours